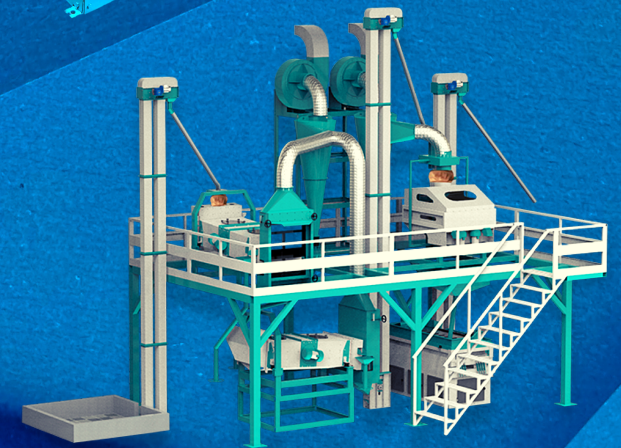
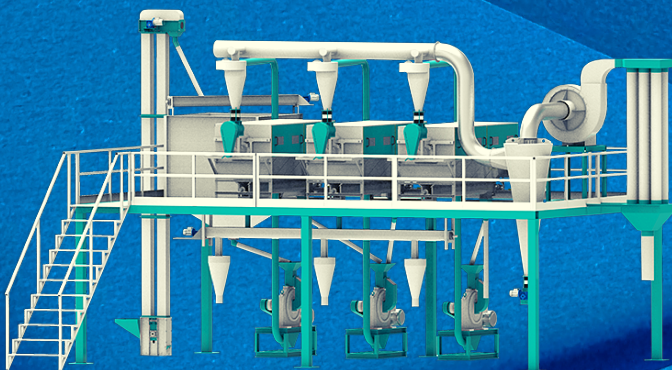
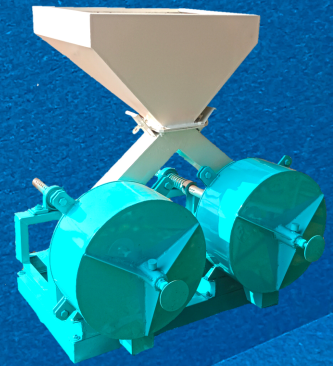
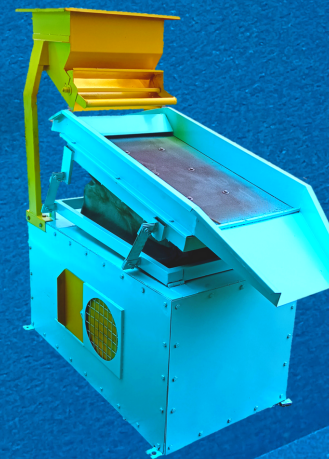
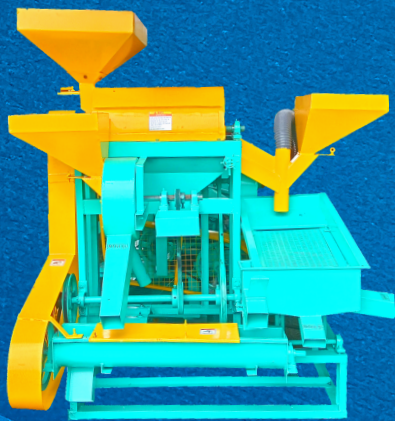
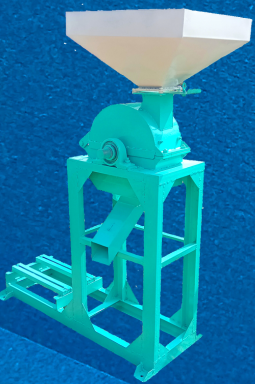


# S. K. ENGINEERING WORKS

Latest Dal Mill Machinery Manufacturer

*We are trying our best for fully satisfaction of our client & maintain their trust*



PLOT NO. TI-14, TRANSPORT NAGAR, MIDC NO. 03, SHIVANI, AKOLA, STATE MAHARASHTRA. PIN 444104.

Contact Details : +91-9673079330, 8446659331

Email ID: [Sk.engineeringworks1984@gmail.com](mailto:Sk.engineeringworks1984@gmail.com) | [www.skengi.com](http://www.skengi.com)





# S. K. ENGINEERING WORKS

Proprietor : Shrinath Vyankatram Kopula

**ABOUT US** - S. K. Engineering Works is largest & oldest Manufacturing Industries in Maharashtra serving since 1998.

Our range of dal mill machine products, besan mill plants, flour mill plants, spices plants, cleaning grading plants & all agro foods processing plants are technically advanced exhibiting high Quality Standards are all latest features.

**S. K. Engineering Works** is a top Manufacturing Exporter & Suppliers of sophisticated range of machinery that includes pulses Mill Machinery, Dal Mill Dryer, Polisher Machine, Bucket Elevators, Dust Collector Unit, Besan Plants, Cleaning Grading Plants, Flour Mill Plants and all customise plants. We are committed towards providing innovative range of processing equipments, which are as per with prescribed industrial standards. Excellent performing and robust in designs, these equipments assure the clients of fast & hassle free operations. To manufacture this high quality range, we come with a modern infrastructure facilities and a team of industry experts. Our efficient team of quality analysts keep a strict vigil on every aspect of manufacturing of these equipments until its dispatch to the clients destination.

**Our Professionals :** Our all professionals are technically high qualified & experience holder. They all are well trained, skilled & veteran in their fields. Our professionals staff includes high qualified Engineers, Marketing Managers & workers etc. for following departments.

- DESIGN
- FABRICATION
- MANUFACTURING
- PRODUCTION
- MAINTANACE
- QUALITY CONTROL

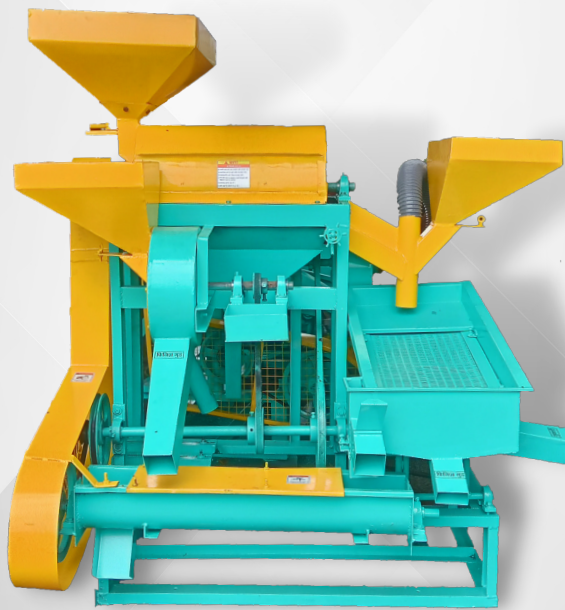
## WHY US ?

- Technically Sound Range
- Sophisticated Infrastructure
- Wide Distribution Network
- Easy Payment Mode
- Competitive Prices
- Wide Range Of Products





भारत सरकार द्वारा प्रमाणित



**PKV 3 HP MINI DAL MILL**

## PKV 3HP MINI DAL MILL SPECIFICATIONS

Grading/Running Capacity	150-200 KGPH
Operation Mode	Manual
Type Of Pulses	All Kind Of Pulses
Motor Power	3 HP Motor
Skid Dimensions	L x W x H in mm (Approx) 1660 x 1370 x 1730
Electric Connection	Single/Three Phase
Recovery Of Broken Pulses	Less than 1 %
Recovery Of Head Pulses	70-80 %
Material Used	MS (Mild Steel)
Pollution Control Required	No
Brand	(PKV Model)
Condition	New

## SILENT FEATURES OF MINI DAL MILL MACHINE

- Easy to install, operate & required less space.
- Suitable for making all type of pulses.
- High recovery rate of pulses from grains.
- Automatic separation of husk,powder,brokens,dehusking pulses
- Also use for wheat filtration.
- Automatic oil/water smearing facility is provided.
- Dustless Process.

## MACHINERY ITEM CONTAINS

Flat Sieve Grader (Khatkhata)  
Emery Roll Peti  
Waram Screw  
Fadfada Machine  
Asperator System (Blower)  
Elect. 3HP Crompton Make Motor  
Bucket Elevator





**PKV 5 HP MINI DAL MILL**

## **PKV 5HP MINI DAL MILL SPECIFICATIONS**

Grading/Running Capacity	350-450 KGPH
Operation Mode	Manual
Type Of Pulses	All Kind Of Pulses
Motor Power	5 HP Motor
Skid Dimensions	L x W x H in mm (Approx) 1950 x 1525 x 2800
Electric Connection	Single/Three Phase
Recovery Of Broken Pulses	Less than 1 %
Recovery Of Head Pulses	70-80 %
Material Used	MS (Mild Steel)
Pollution Control Required	No
Brand	SKEW02 (PKV Model)
Condition	New

## **SILENT FEATURES OF MINI DAL MILL MACHINE**

- Easy to install, operate & required less space.
- Suitable for making all type of pulses.
- High recovery rate of pulses from grains.
- Automatic separation of husk,powder,brokens,dehusking pulses
- Also use for wheat filtration.
- Automatic oil/water smearing facility is provided.
- Dustless Process.

## **MACHINERY ITEM CONTAINS**

Flat Sieve Grader (Khatkhata)  
Emery Roll Peti  
Waram Screw  
Fadfada Machine  
Asperator System (Blower)  
Elect. 5 HP Crompton Make Motor  
Bucket Elevator

**"To make agriculture sustainable, the grower has got to be able to make a profit".**





भारत सरकार द्वारा प्रमाणित



**SK-SUPRIME 4 HP Mini Dal Mill**

## **SK-SUPRIME 4HP DAL MILL SPECIFICATIONS**

Grading/Running Capacity	300-350 KGPH
Operation Mode	Automatic
Type Of Pulses	All Kind Of Pulses
Motor Power	3HP + 1HP Motor
Skid Dimensions	L x W x H in mm 2936 x 2068 x 2670
Electric Connection	3 Phase Required
Recovery Of Broken Pulses	Less than 1 %
Recovery Of Head Pulses	70-80 %
Material Used	MS (Mild Steel)
Pollution Control Required	No
Brand	SK-Supreme
Condition	New

## **PRODUCT (DAL) RECOVERY PERCENT**

Pigeon Pea (Toor)	75-78 %
Green/Black Gram (Moong/Udid)	78-80 %
Bengal Gram (Chana)	80-82 %

## **MACHINERY ITEM CONTAINS**

Cleaning Grader  
Emery Roll Peti  
Bucket Elevator  
Waram Screw  
Fadfada Machine  
Asperator System (Blower)

*Hi-tech & advance technology in pulse processing.  
Provides maximum efficiency & pulses recovery.*

**"The discovery of agriculture was the first big step toward a civilized life".**





भारत सरकार द्वारा प्रमाणित



SK-SUPRIME 6 HP Mini Dal Mill

## SK-SUPRIME 6HP DAL MILL SPECIFICATIONS

Grading/Running Capacity	500-550 KGPH
Operation Mode	Automatic
Type Of Pulses	All Kind Of Pulses
Motor Power	5HP + 1HP Motor
Skid Dimensions	L x W x H in mm 2936 x 2068 x 2670
Electric Connection	3 Phase Required
Recovery Of Broken Pulses	Less than 1 %
Recovery Of Head Pulses	70-80 %
Material Used	MS (Mild Steel)
Pollution Control Required	No
Brand	SK-Supreme
Condition	New

## PRODUCT (DAL) RECOVERY PERCENT

Pigeon Pea (Toor)	75-78 %
Green/Black Gram (Moong/Udid)	78-80 %
Bengal Gram (Chana)	80-82 %

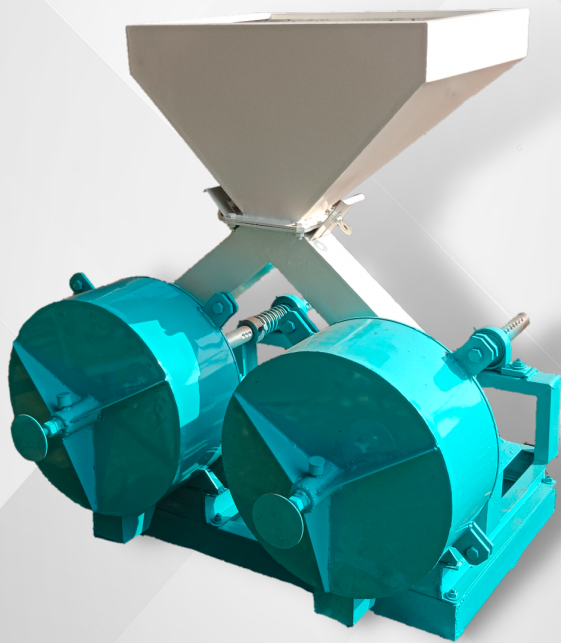
## MACHINERY ITEM CONTAINS

Cleaning Grader  
Emery Roll Peti  
Bucket Elevator  
Waram Screw  
Fadfada Machine  
Asperator System (Blower)





**METALLIC SHELLER**



**DOUBLE METALLIC SHELLER**

### **METALLIC SHELLER (14" INCH)**

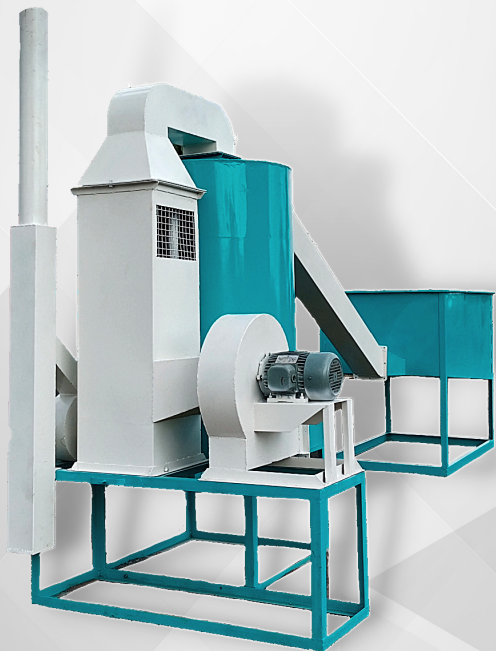
Splitting/Running Capacity	1 - 2.5 TPH
Operation Mode	Automatic
Type Of Pulses	All Kind Of Pulses
Motor Power	3 HP Motor
Skid Dimensions	L x W x H in mm 762 x 460 x 762
Electric Connection	3 Phase Required
Material Used	MS (Mild Steel)
Pollution Control Required	No
Condition	New

### **DOUBLE METALLIC SHELLER (14" INCH)**

Splitting/Running Capacity	2 - 2.5 TPH
Operation Mode	Automatic
Type Of Pulses	All Kind Of Pulses
Motor Power	5 HP Motor
Skid Dimensions	L x W x H in mm 762 x 965 x 1200
Electric Connection	3 Phase Required
Material Used	MS (Mild Steel)
Pollution Control Required	No
Condition	New

**AVAILABLE IN 10" & 14" INCH METAL PLATE**





## PULSES DRYER

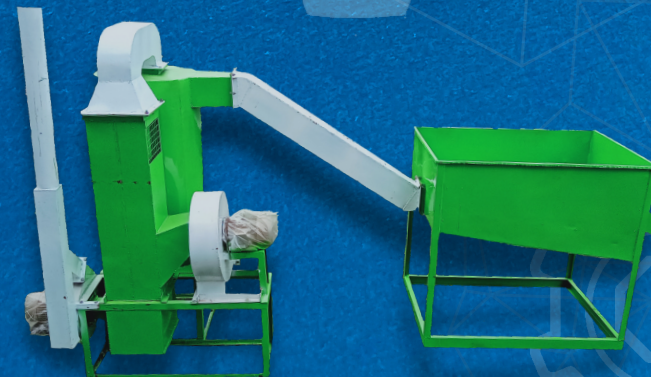
Dring Capacity Per Batch  
Operation Mode  
Electric Connection  
Application  
Material  
Motor Power  
Condition  
Voltage  
Power Source

500 KGPH Upto 6TPH  
Automatic  
Three Phase  
For all kind of pulses  
MS (Mild Steel)  
4 HP Upto 22 HP  
New  
415 V  
Fire wood, Bio west  
like pallets, pulses  
husk etc.

## SILENT FEATURES OF DRYER MACHINE

Features:

- Suitable for dal drying, Continuous operation
- Suitable for online drying, Uniform drying
- Gentle drying of materials hence material is not deteriorated
- High energy efficient, Low power demand, Closed operation
- Auto temperature controlling system, Fully automatic operation



**SPECIFICATIONS :**

POWER REQUIRED IN HP

2 HP    3 HP    5 HP    7.5 HP

CAPACITY PER HOUR IN KG

70-80    80-100    100-150    150-200

SHIPPING VOLUME IN CU. METERS

2        3        4        5



**CENTRIFUGAL MACHINE (BESAN/FLOUR PLANT)**

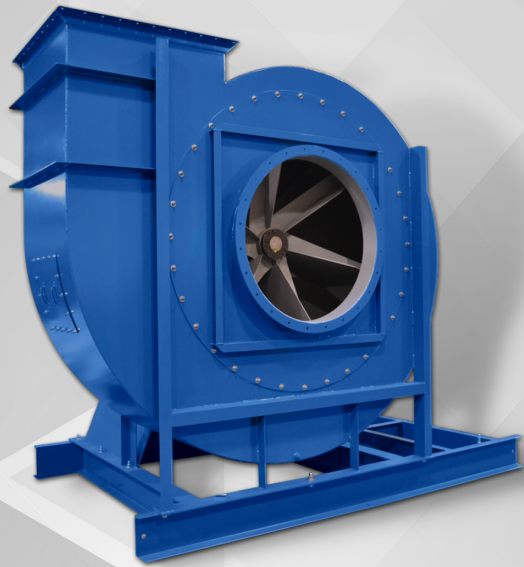
We are known for offering a quality- assured range of Centrifugal Machines. These machine are available in several capacities ranging from 2 HP to 7.5 HP as well as in different grinding chambers. Manufactured quality tested components. These machines are precisely engineered to deliver quality outcomes. We offer these machines in the exact specifications provided by our customers.



**AUTOMATIC BESAN/FLOUR MILL PLANT**

**"The best way to fight poverty is through agriculture."**





**BLOWER**



**CYCLONE**

## INDUSTRIAL BLOWERS

Mounting	Duct Mounted Fan
Capacity	100cfm-100000cfm
Static Pressure	10 mm - 1000 mm
Volume	From 300 m <sup>3</sup> /h upto 50000 m <sup>3</sup> /h
Tempetature	Upto 90 Degree C to 400 Degree C
Drive Arrangement	Electric Motor V-belt / Coupling
Body Material	MS (Mild Steel)
Condition	New

## CYCLONE DUST COLLECTOR

We offer high quality range of Separating Machines such as Horizontal Cyclone Separator (Mana), Aspiration Channel, Cyclone Separator and Vibro Separator. These have good demand in the market due to its high quality and durability. Our client can avail high quality range of Horizontal Cyclone Separator (Mana). This range is widely appreciated by our clients which are situated all round the nation. We manufacture the provided range using supreme quality raw material and parts. Our range is highly demanded by the clients.

Dust Collector Type	Single
Material	Mild Steel
Dust Removal Efficiency	95 % - 99 %
Power Supply	Electric
Electric Connection	Three Phase





## **ROUND GRADER (CHALNA)**

We have been making round/drum chalna for the dal mill industry from long. Recent additions and modifications has made the seed/pulses cleaning a much cleaned process. In fact, due to the demand of the industry, we have recently introduced vibro cleaner and destoner in the cleaning section. The complete set is connected with a high pressure suction blower equipped with a cyclone separator and air lock system to arrest any dust particles that may escape during the cleaning process. We give guarantee of giving the best export quality seeds/pulses from our cleaning processing system.

## **SILENT FEATURES OF DRYER MACHINE**

Available in Seats	3 Seat 4 Seat 5 Seat
Grading Capacity in TPH	2 To 5 TPH
Material Use	Mild Steel
Power Supply	Electric
Electric Connection	Three Phase
Drive Arrangement	Electric Motor V-belt / Coupling
Power Required	3 HP To 10 HP



**ROUND GRADER**

**"We don't just produce food. We produce nutrition for mankind."**



**BUCKET ELEVATOR****MOBILE VERTICAL  
BUCKET ELEVATOR**

## BUCKET ELEVATOR

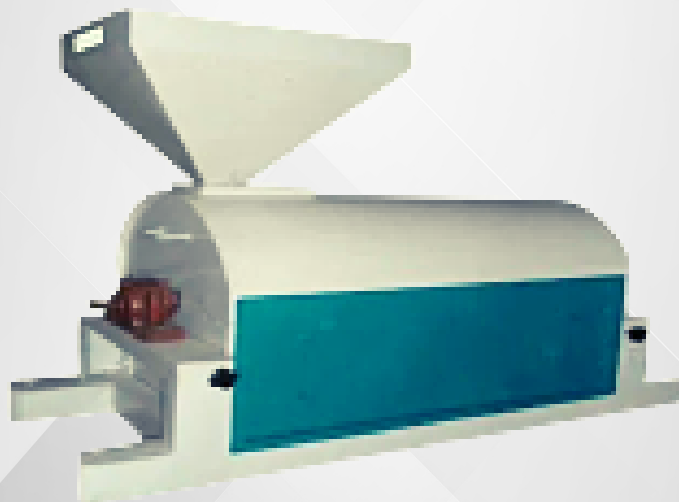
We have developed the latest range of single box and twin box elevators in various sizes for a cross section of industrial application. We have also introduced cotton-nylon belts elevators, Chain driven elevators, and various other modified versions as per clients requirements.

Bucket elevators are designed to move flowing powders, seeds, pulses, cereals or bulk solids vertically. Bucket elevators use an endless belt or chain and have a series of buckets attached to it. Bulk material is spread in to an inlet hopper. Buckets dig into the material and convey it up and over the head sprocket/pillu and then throw the material out a discharge throat.

## TECHNICAL SPECIFICATIONS

Capacity in TPH	1 To 10 TPH
Material Use	Mild Steel
Buckets Material Use	MS, PVC, Self Cleaning Type Buckets
Power Supply	Electric
Electric Connection	Three Phase
Drive Arrangement	Electric Motor / Geared Motor V-belt / Coupling
Power Required	1 HP To 3 HP





**EMERY ROLL PETI**

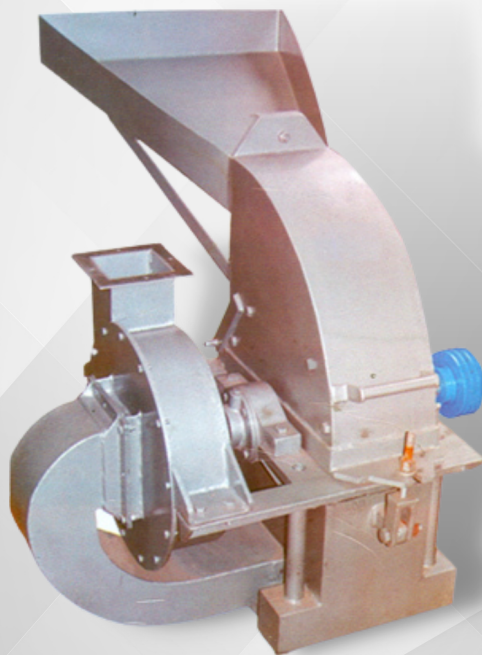
## EMERY ROLL

The Pulse Breaker is an ideal machine for processing of various types of Pulses like (Black Gram) Urad Dall, (Pigeon Peas), Toor Dall, (Green Gram) Moong Dall, (Gram) Chana Dall, (Lentil ) Masur Dall, Chick Peas, Floor Mil etc. and also useful for removing husk or peeling from all seed. The machine body is made out of Mild Steel and can be assembled either on a MS Stand or on a constructed concrete / brick platform according to the requirement of the buyer.

DESCRIPTION	POWER REQUIRED IN HP	CAPACITY PER HOUR IN TONNES
ER-11	3.00	0.3-0.35
ER-12	5.00	0.5-0.8
ER-13	7.50	1.0-1.2
ER-14	10.00	1.5-2.0
ER-15	12.50	2.0-2.5
ER-16	12.50	2.5-3.0
ER-17	12.50	3.0-3.5
ER-18	12.50	3.0-3.5
ER-19	15.00	3.5-4.0

*"You can get everything in life you want if you will just help enough other people get what they want."*



**PULVERISER**

## PULVERISER

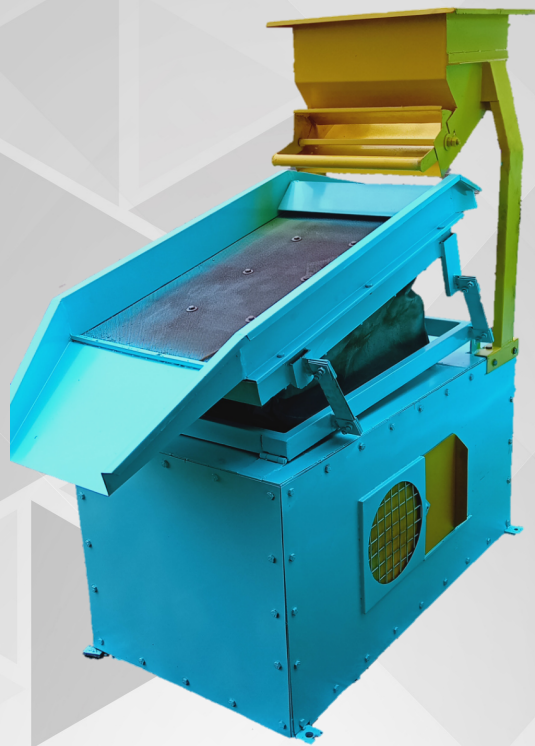
The pulverizer consists of an encased rotor carrying swing hammers, whizzer classifier for fineness regulation and pressure gradient creator mounted on a solid shaft. Raw material to be pulverized enters the crushing chamber through the hopper or the automatic rotary feeder. The impact of the hammers on the feed material against the liner plates reduces it into fine powder. The ground material is carried towards the whizzer classifier for classification and the oversize particles are rejected by the classifier and returned to the crushing chamber for further grinding. The classified material is then conveyed into the cyclone for collection and bagging. A dust collector is provided in the system for ensuring dust less operation and for no loss of ground powder.

## TECHNICAL SPECIFICATIONS

Capacity in TPH	100 To 500 KGPH
Material Use	Mild Steel
Power Required	5 HP To 50 HP
Power Supply	Electric
Electric Connection	Three Phase
Drive Arrangement	Electric Motor V-belt / Coupling

*"Develop success from failures. Discouragement and failure are two of the surest stepping stones to success."*



**DE-STONER****SCREW WORM**

## DE-STONER

Destoner is effective solution for cleaning the food grains by removing stones, sticks and mud balls etc. It is compact and sturdy design to clean Rice, Wheat, Maize, Paddy, Powar, Pulses & Spices also Oil seeds. After the cleaning process, the stones destined helps in separating the trash or any kind of stones in grains. Designed as per the jage requirements, these machines consume minimal amount of energy while yielding maximum returns. The basic principle behind the working of destined is the difference in density of the impurity and the grains.

## SCREW CONVEYOR (WORM)

Screw conveyors move materials either horizontally, on an incline or vertically. They are used to feed, distribute, collect or mix and can be equipped to either heat or cool while performing this transfer. With the proper cover and gasketing, they are easily made dust or weather tight and rodent proof. Their clean compact design saves valuable space since no return run is required. Screw Conveyors fit in cramped quarters, are simple to support and easy to install . . . and they cost less than most other types of conveyors.

*"Success is peace of mind, which is a direct result of self-satisfaction in knowing you made the effort to become the best of which you are capable."*





## BEST DEALS WITH

- MINI DAL MILLS
- DAL MILL PLANTS
- FULLY CUSTOMISED DAL MILL PLANTS
- BESAN MILL PLANTS
- CLEANING GRADING PLANTS
- FLOUR MILL PLANTS
- FOOD PROCESSING PLANTS
- ALL AGRO FOODS PROCESSING MACHINERIES



PLOT NO. TI-14, TRANSPORT NAGAR, MIDC NO. 03, SHIVANI, AKOLA, STATE MAHARASHTRA. PIN 444104.

Contact Details : +91-9673079330, 8446659331

Email ID: [Sk.engineeringworks1984@gmail.com](mailto:Sk.engineeringworks1984@gmail.com) | [www.skengi.com](http://www.skengi.com)

